

PS450BDZB

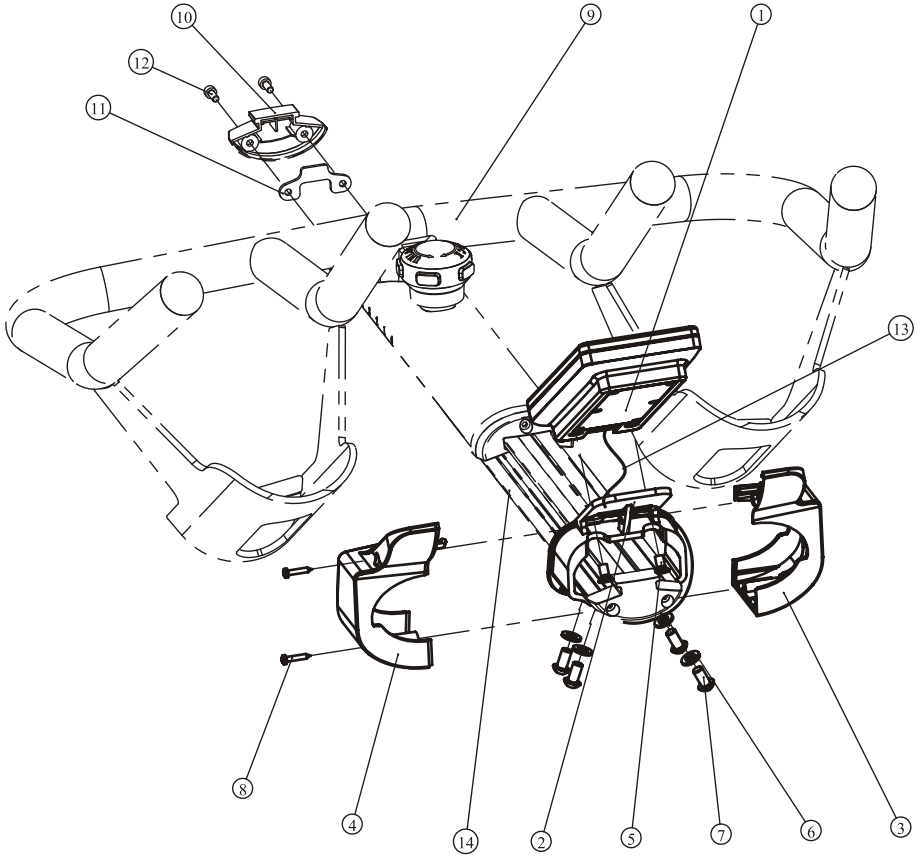
CONSOLE

OWNER'S MANUAL

18Q

CAUTION! Read all precautions and instructions in this manual before using this equipment.

Exploded View



Assembly and Parts List

Assembly

1. Remove the two M4*10 Screws (#12), Lower Sliding Block End Cover (#10) and the Stainless Steel Plate (#11) from Main Frame Assembly (#14), slide the Handle Bar Assembly (#9) backward for enough distance.
2. Pass the Cable, For Console (#13) through the Console Support Frame (#2), then plug the cable into the Console (#1).
3. Attach two M5*10 Screws (#5), Console (#1) to the Console Support Frame (#2) tightly.
4. Attach four M6*12 Screws (#7), four $\phi 6$ Washers (#6), Console Support Frame (#2) to Main Frame Assembly (#14) tightly.
5. Use two ST2.9*16 Screws fasten the Left and Right Cover For Console (#3,#4) together.
6. Attach Lower Sliding Block End Cover (#10), the Stainless Steel Plate (#11) and two M4*10 Screws (#12) to Main Frame Assembly (#14) tightly.

Parts List

Item No.	Part No.	Description	QTY
1	B233	Consl	1
2	PS450BDZB03	Console Support Frame	1
3	PS450BDZB01	Left Cover For Console	1
4	PS450BDZB02	Right Cover For Console	1
5	GB819M5*10DS2	Screw M5*10	2
6	GB956DS2	Washer $\Phi 6.5 \times \Phi 12 \times 1.6$	4
7	PNLM6*12DS20	Screw M6*12	4
8	GB845ST2.9*16DS	Screw ST2.9*16	2
9	PS45017ASSY	Handle Bar Assembly	1
10	PS4501507	Lower Sliding Block End Cover	1
11	PS4501603	Stainless Steel Plate	1
12	GB70M4*10N19	Screw M4*10	2
13		Cable ,For Console	1
14	PS450B1601	Main Frame Assembly	1

Operating Instruction

Display panel

Display panel diagram (Icon does not describe size/proportion)



Page 1



Page 2



Page 3

Key description section



Short press: Turn on the backlight, after 3 seconds Turn off.

Long press: Press and hold for 3 seconds to restart the system in any state.



Switch the motion data interface.



Switch the motion data interface.

Operating Instruction

FUNCTIONS

Normal mode (Quick Start)

Display:

- Page one display order
 - LEVEL Windows: LEVEL value indication
 - Calories Windows: Calorie value indication
 - WATT Windows: Real-time watt value indication
 - RPM Windows: Real-time RPM value indication
 - Heart Windows: Real-time Heart rate indication
 - SPEED Windows: Real-time Speed value indication
 - TIME Windows: Time value indication
 - Distance Windows: Distance value indication
- Page two display order
 - LEVEL Windows: LEVEL value indication
 - Calories Windows: Calorie value indication
 - MAX WATT Windows: During fitness MAX Watt value indication
 - MAX RPM Windows: During fitness MAX RPM value indication
 - MAX Heart Windows: During fitness MAX Heart rate indication
 - MAX SPEED Windows: During fitness MAX Speed value indication
 - TIME Windows: Time value indication
 - Distance Windows: Distance value indication
- Page three display order
 - LEVEL Windows: LEVEL value indication
 - Calories Windows: Calorie value indication
 - AVG WATT Windows: During fitness AVG Watt value indication, Fitness time exceeds one minute.
 - AVG RPM Windows: During fitness AVG RPM value indication, Fitness time exceeds one minute.
 - AVG Heart Windows: During fitness AVG Heart rate indication, "HP" is displayed when there is no value, Fitness time exceeds one minute.
 - AVG SPEED Windows: During fitness AVG Speed value indication, Fitness time exceeds one minute.

Operating Instruction

TIME Windows: Time value indication

Distance Windows: Distance value indication

Into sports: About 5 seconds after riding into fitness.

Fitness status Key Description:



Short press: Turn on the backlight, after 3 seconds Turn off.

Long press: Press and hold for 3 seconds to restart the system in any state.



Switch the motion data interface.



Switch the motion data interface.

Other function

- Low battery detection: When the battery is low, the small rectangle icon in the upper left corner of the display window flashes.
- Automatic shut-down: Automatic shutdown 60 seconds after riding stops.
- Backlight display: Backlight automatic lighting 3 seconds in key operation.

Display the range of values

	Initial value	Setting	Display range
TIME (H: M: S)	0:00	N/A	0:00~19:59:59
SPEED (km/h)	0.0	N/A	0~99.9
DISTANCE (km)	0.0	N/A	0.0~999
PULSE (bpm)	HP	N/A	40~199
CALORIES (calories)	0	N/A	0~1999
LEVEL	N/A	N/A	1~20
RPM	0	N/A	0~199
WATT	0	N/A	1999

